

# The Whyalla Golf Club



The Most Elegant & Unique Venue in Whyalla

Welcome...

Thank you for considering The Whyalla Golf and Bowling Club (W.G.B.C.) as the ultimate setting for your special occasion.

Situated on the outskirts of Whyalla, the venue sits proudly on a second storey overlooking the picturesque golf course.

Our Function Room features a split level that boasts floor to ceiling windows, allowing you and your guests uninterrupted views of our lush green fairways and beyond. Kitchen and toilet facilities are all situated close by, and a balcony is available for those who wish to soak up the serenity of the golf course, while taking in the beautiful sunset.

The function room is available from early to late 7 days a week, however before 6.00pm the bar facilities may be accessed by W.G.B.C. members. We have the capacity to seat 130 guests for a formal set up, or 160 guests in a cocktail style event. The stunning maypole style fairy light and canopy display, make for a truly magical setting.

All hire, decoration and accessory options are outlined in this package. In addition, our Function Coordinator and Club Management will be available to help you choose the best mix of catering requirements to meet your budget.

This information package will help you create your special day and inform you of everything The Whyalla Golf and Bowling Club has to offer. Our professional management team are eager to make this occasion - forever memorable.

Regards

Function Management Team

## Hire options

For your convenience a list of *Recommended* and *Preferred Caterers* is available for your consideration, and is included at the end of this package. Should you wish to provide an alternate caterer, please consult with our staff. A "Guide for Caterers" is available and includes Occupational Health & Safety and Public Liability Insurance requirements.

You are also welcome to bring in your own decorations/accessories, however, please check these with function management. All decorations must be collected the morning following your event.

To avoid a \$100 cleaning surcharge, we strongly encourage you not to use table sprinkles. Naked flames, live goldfish or scatters are **not** permitted at The Whyalla Golf Club. Any damage to the Golf Club or equipment will incur costs to be paid by the hirer.

<u>Function Room hire</u> .....	\$300
W.G.B.C Members Room hire fee (see Note).....	\$150
Maypole style Fairy Light and Canopy Ceiling Display.....	\$500
Three side Balcony Festoon Lighting.....	\$150
Data Projector, Screen + Powered PA Speaker (Hire and Setup)....	\$75

Below is a list of Accessories that will help to make your day memorable.

Chair Covers with Sash  
Table Cloths (available in Black or White)  
Table Skirting (pleated)  
Bridal Table Set-up (Cloth/Skirting)  
Bridal Table Swagging and Fairy Light  
Cake Table Set-up (Cloth/Skirting/Swagging)  
Tea & Coffee Set-up  
Present Table Set-up  
Back Drop Tulle and Fairy Lights

Chair covers are available in a variety of colours, with a multi choice of sash colours.  
(Contact Exclusive Bridal Hire or the Accessory Hire Company of your Choice for pricing.)

**Note:** For Golf Club Member bookings, discount is only offered where the booking is for the member or their immediate family.

## Bar requirements

W.G.B.C is liquor licensed until 12:00 midnight (9:00pm Sunday). Our Function Coordinator can advise you on wine, bottled or can beer, pre-mix and spirits available. If you chose to bring in your own alcoholic beverages, a \$14 corkage fee per bottle will apply.

## Bookings

For further information and date availability for booking your wedding or special occasion, please contact the Function Coordinator (Cherie Manfield) on 0412920232 or email [anthony.cherie@bigpond.com](mailto:anthony.cherie@bigpond.com) or leave a message at the club (08 8645 9109), or email the club at [whyallagolf@bigpond.com](mailto:whyallagolf@bigpond.com).

A \$300 deposit is required when booking. Eftpos facilities are available or you may pay the account by either cash or direct Bank Transfer. Payment should to be discussed with the Function Manager prior to your event. Payment of deposit should be made as soon as possible after booking of your function and can be made at the Golf Club or by EFT to the club's bank account. Contact the Function Coordinator to arrange the payment option most convenient for you.

## Cancellations Policy:

Cancellations made up to 3 months prior to function, are eligible for 100% refund of deposit.

Cancellations made between 12 - 8 weeks prior to function - 50% refund of deposit.

Cancellations less than 8 weeks prior to function - no deposit refunded.

## Visiting the Club:

You are welcome to view the facilities before and/or after booking. The club is open from 8:00am every day until around noon and until approximately 5:00pm Wednesday, Saturday and Sunday. A phone call or message before you visit will ensure there is someone available to show you the venue and answer any questions you may have.



# Recommended Caterers - Whyalla Golf Club - Function Room

## Exclusive Bridal Hire

David & Trudy James - 0409678269  
david@exclusivebridalhire.com

Chefs David James and son Kyle offer an extensive selection of set menus and catering services. They have over 45 years of combined experience in the hospitality industry and base their menu selection on popular recipes, using local ingredients.

---

## Mint Cafe Whyalla

Nathan Head – (08) 86440787  
mintcafewhyalla@outlook.com

Head Catering is a well established local Catering business that specializes in Weddings and other special events. Kate and Nathan's catered functions include Birthdays, Engagements, Anniversaries, Christmas parties, Graduations, Corporate functions, Sporting presentation dinners, Wakes, Baby Showers and more!

---

## Catering by Kath

Kath Welgraven - 0400309530  
tymaza@hotmail.com

Katherine Welgraven is a qualified Chef of 30 years. She has extensive experience in catering for all occasions with her menus having been enjoyed by many Whyalla diners. She can cater for any of your requirements from a sit down meal to a cocktail party.

---

## Em's Palate

Emma Inglis - 0487167139  
www.facebook.com/emspalate/

A mobile food van also specialising in catering, grazing tables, prop hire, private functions and community events!

---



## A Message from Exclusive Bridal Hire and Gifts

Our Catering division is proud to be associated with the Whyalla Golf Club. This partnership offers a complete one stop package for your next function or event.

We are also a preferred supplier to the Whyalla Golf Club for quality decorations, including outdoor ceremony furniture. Why not have your ceremony on the beautiful lawned area adjacent to the venue and then have your guests flow straight into your wedding reception room? We can organise all the details.

Chefs David James and son Kyle have teamed up to offer an extensive selection of set menus and catering services. They have over 50 years of combined experience in the hospitality industry and base their menu selection on popular recipes, using local ingredients.

Menu planning and pricing is based on individual requirements and within budget limits. We will work with each client to guarantee we design and plan the best menu for their function.

We look forward to meeting with you to discuss your requirements.

Regards

David, Trudy and Kyle James

David James 0409678269

Trudy James 0431428442

Email: [david@exclusivebridalhire.com](mailto:david@exclusivebridalhire.com)

Web: [www.exclusivebridalhire.com](http://www.exclusivebridalhire.com)

Facebook, Instagram

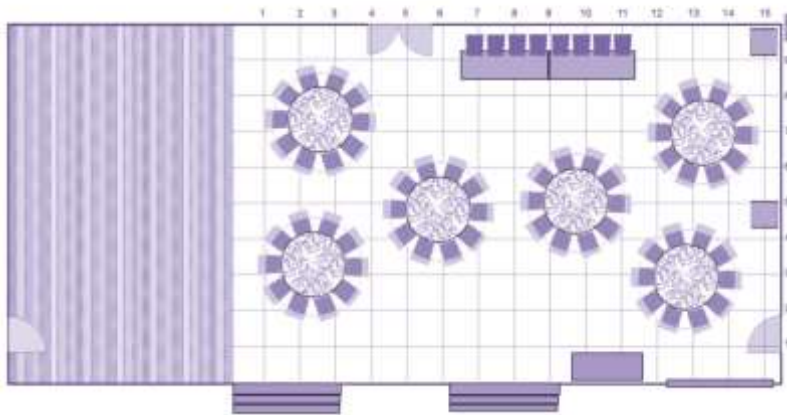
Visit our showroom at 171 Jenkins Avenue, Whyalla



# Examples of Table settings

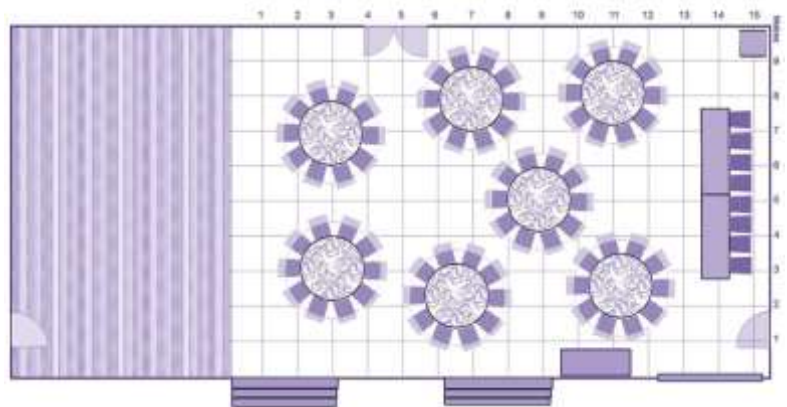
Wedding Layout with wedding table  
**59 - 68 people**

Max 60 people (6 tables x 10 settings)  
+ Wedding table of 8



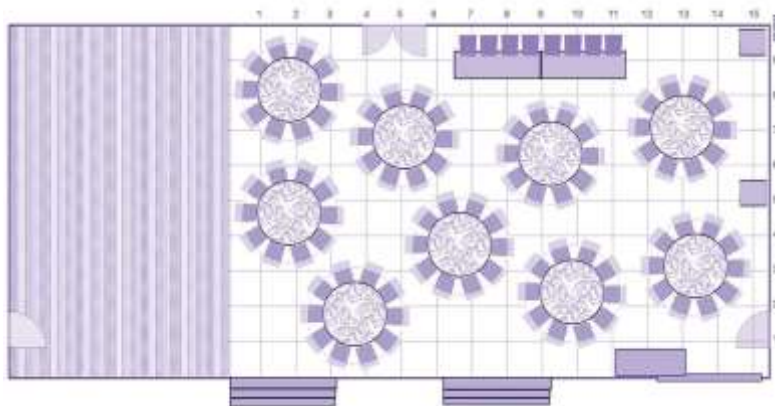
Wedding Layout with wedding table  
**69 - 78 people**

Max 70 people (7 tables x 10 settings)  
+ Wedding table of 8



Wedding Layout with wedding table  
**89 - 98 people**

Max 90 people (9 tables x 10 settings)  
+ Wedding table of 8



Wedding Layout with wedding table  
**111 - 128 people**

Max 120 people (12 tables x 10 settings)  
+ Wedding table of 8

